

FLUME-3/4" SEASONED HARDWOOD

1" OVERHANG

— kinydon —

HEADWATER LEVEL BEHIND DAM

1/8" SHEET STEEL FILE TO KNIFE EDGE

4" OF WHEEL

SLUICE GATE 3/4" x 6-7/8" x 20" SEASONED HARDWOOD. LOCATE AT ANY CONVENIENT PLACE ALONG FLUME

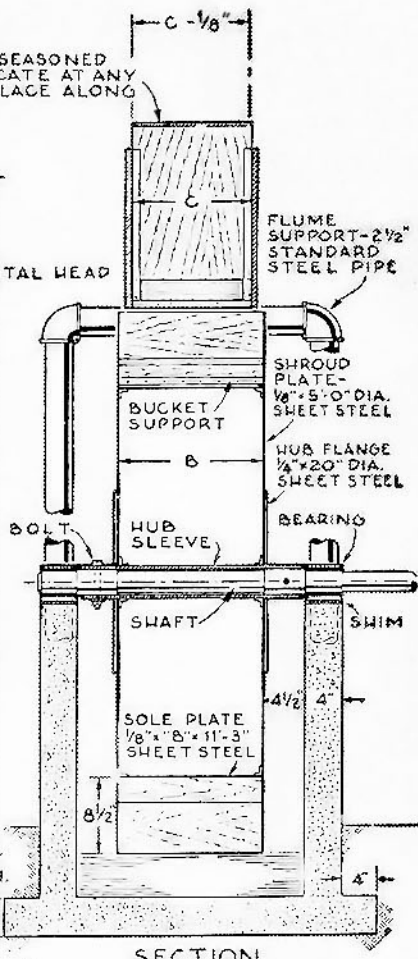
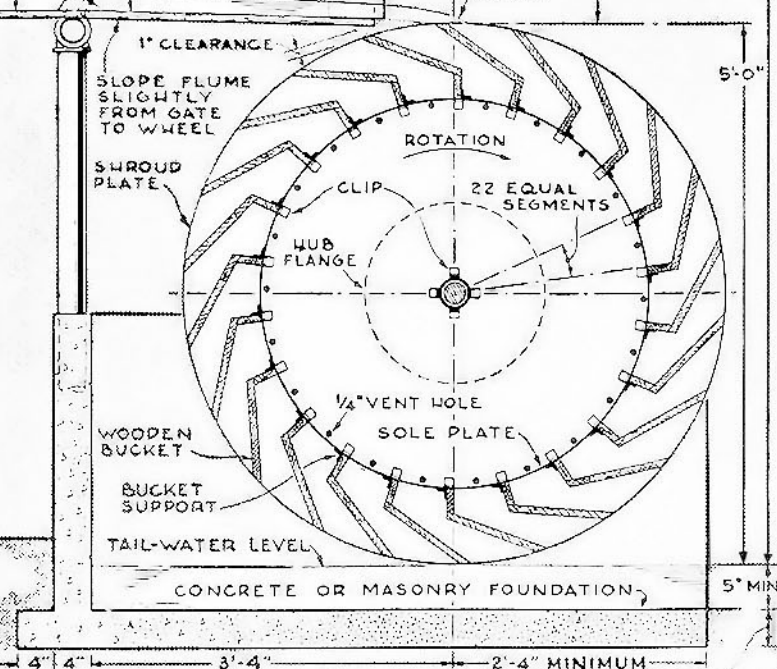
C-1/8"

SLUICE-GATE GUIDES

15" FLUME HEAD

6'-3" TOTAL HEAD

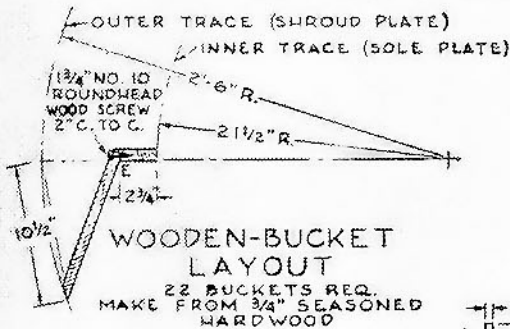
FLUME SUPPORT-2 1/2" STANDARD STEEL PIPE



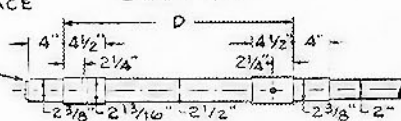
CENTERLINE ELEVATION

AS REQ TO PLACE FOOTING ON SOLID EARTH

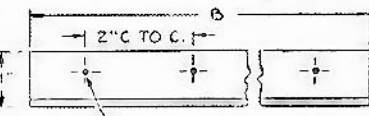
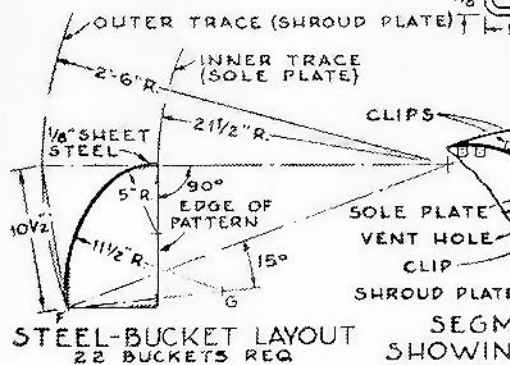
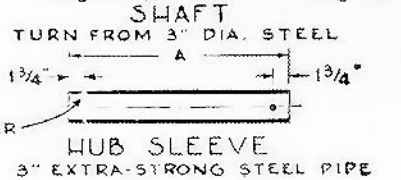
SECTION



1/16" CHAMFER



DRILL TWO 3/8" HOLES AT RIGHT ANGLES TO EACH OTHER



WHEEL WITH WOODEN BUCKETS: DRILL 13/16" NO. 8 SELF-TAPPING SCREWS

WHEEL WITH STEEL BUCKETS: NO. 8 SELF-TAPPING SCREWS

CLIP 52 REQ FOR WHEEL WITH WOODEN BUCKETS 272 REQ. FOR WHEEL WITH STEEL BUCKETS MAKE FROM SHEET STEEL

DIMENSIONS				
SYMBOL	A	B	C	D
1/2 HP.	24 7/32	15 31/32	13"	25 7/32
2/3 HP.	29 3/16	21 5/16	18"	30 9/16
3/4 HP.	32 1/4	24"	21"	33 1/4
1 HP.	40 1/32	31 7/32	29"	41 5/32